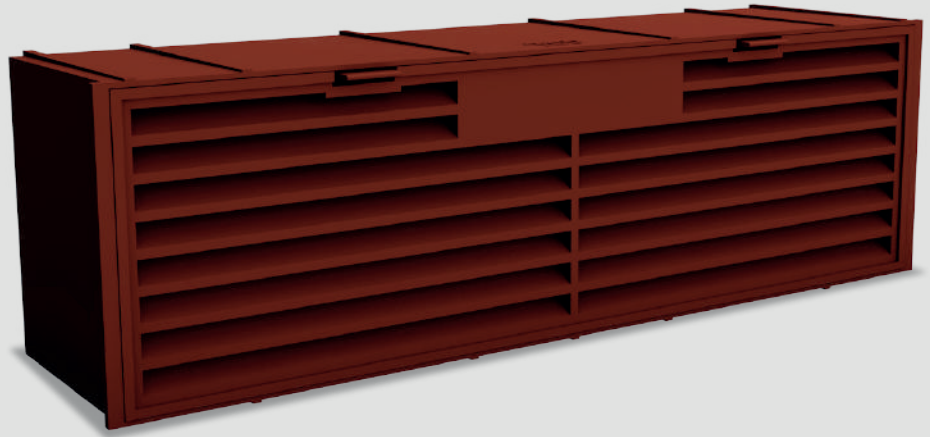




BUFFALO
FLOOD SYSTEMS

ANTI-FLOOD AIRBRICK



The Buffalo® Anti-flood Airbrick's innovative design automatically closes in the event of flooding by using the power of flood water. A standard unprotected airbrick could allow up to 5,000 litres of water per hour to enter the building.

- Allows air to pass freely through the Anti-flood Airbrick complying with BS 493:1995
- Manufactured to comply with BS 851188-2:2019
- Colours: Terracotta, Buff, Black, White, Engineering Blue, Neutral (Opaque)
- Fully compliant with the Code for Sustainable Homes
- 5 Year Manufacturer's Guarantee

APPLICATIONS

Can be fitted to single, double and triple airbrick apertures.

Can be installed in brick, concrete, stone, steel, render finished or hardwood structures across both domestic and commercial properties.

CERTIFICATIONS/STANDARDS

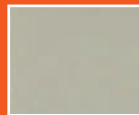
Complies with British Standard BS 493:1995 to provide ventilation under floor voids and in wall cavities: provides 5400mm² of free airflow.

GUARANTEE

5 Year Manufacturer's Guarantee.

PRODUCT DIMENSIONS

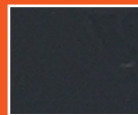
Length: 210mm
Height: 62mm
Depth: 56mm



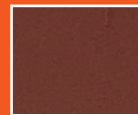
White



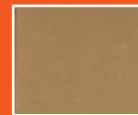
Engineering Blue



Black



Terracotta



Buff



Neutral (Opaque)

For more information on this product or other Buffalo Flood products, contact The Flood Company:

T. 0800 999 5355
www.thefloodcompany.co.uk

Distributed by:



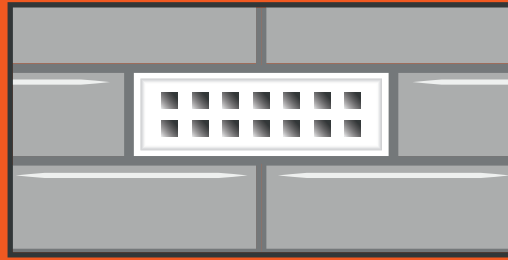
**TO FIGHT THE FLOOD,
INSTALL THE BUFFALO.**

Buffalo is a Water & Pest Technologies brand.

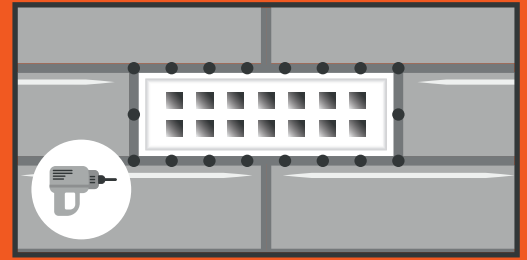


Airbrick Installation Instructions

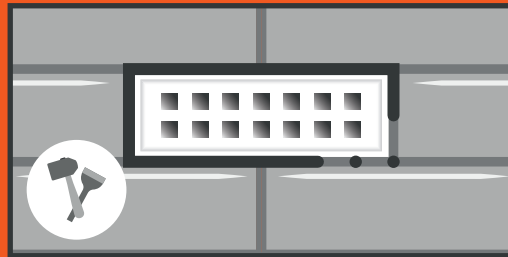
The Buffalo Airbrick can be easily installed by a competent builder.



Identify the airbrick being replaced.



Use a power drill to drill through the mortar around the airbrick, starting in one corner.



Remove all the mortar around the airbrick using a grinder or a hammer and chisel.



Take out the loose airbrick, removing any remaining mortar, then brush clean the area around the opening.



Slide the Buffalo Airbrick into the opening, checking that it is upright and centred, as indicated.



Mix sand and cement and work the mortar around the airbrick, ensuring joints are fully packed.



Take notice of the mortar mix and pointing style, as they vary by region. It is imperative that all mortar and pointing is watertight.



When finished, clean the surrounding area to remove any residual mortar.

NB If a double airbrick is being replaced, two Buffalo Airbricks can be stacked one on top of another.