

THIS DRAWING IS ISSUED TO THE CONDITION THAT IT IS NOT COPIED, REPRODUCED OR DISTRIBUTED IN WHOLE, IN PART OR USED IN ANYWAY DETRIMENTAL TO THE INTERESTS OF THE FLOOD COMPANY © .

FAILURE TO INSPECT, ACCEPT/COMMENT & SIGN OFF ALL COMPLETED FIRE RATED GLAZING WORKS ONCE INSTALLED BY BOTH PARTIES, WILL PREVENT THE ISSUE OF A FIRAS CERTIFICATE OF CONFORMITY FOR THE WORKS.

DO NOT SCALE FROM THIS DETAIL, IF IN DOUBT ASK.

Notes:

FOR ALL FIRE RATED SCREENS AND DOORS ALL BEAD STUDS TO BE REMOVED BEFORE PAINTING CORNER STUDS TO BE REPLACED ONLY AFTER PAINTING

CONTRACT SUPPLY AND DELIVER

LOCATION EXTERNAL

SYSTEM VOST ALPINE 50 & 40 MILD STEEL SECTIONS

FINISH PPC RAL 7016 (ANTHRACITE GREY) MATT

GLAZING 13.5mm CLEAR TOUGHENED LAMINATE

3x15mm (EXT) & 5x15mm (INT) BLACK GLAZING TAPES AROUND FRAME REBATE TO BE BLACK SILICONE POINTED TO BOTH SIDES.
MANIFESTATION IF REQUIRED BY OTHERS

HARDWARE

REF No.	DESCRIPTION	Qty
KO40-180-3D	WELD ON HINGE	3
441	SECURITY BOLT	1
PH357	3 POINT PANIC PUSH BAR (INT)	1
ARK-FDP1	THE FLOOD COMPANY PACKING PLATE	2
ARK-FDP2	THE FLOOD COMPANY PACKING PLATE	2
ARK-FDL1	THE FLOOD COMPANY LATCH PLATE	3
PH361	LOCK / LEAVER HANDLE (EXT)	1
102789	GEZE TS4000 CLOSER, SILVER	1
102421	GEZE TS4000 LINK ARM, SILVER	1
ARK-FDCP1	THE FLOOD COMPANY, ALUMINIUM CLOSER MOUNTING PLATE	1

GASKETS

INTERNAL THE FLOOD COMPANY PERIMETER

EXTERNAL THE FLOOD COMPANY EXTERNAL

FIXINGS FRAME TO STRUCTURE PREPARE FOR Ø8mm FIXINGS THROUGH STRAPS FIXED INTO FRAME USING M4 CSK TEK SCREWS AT NOMINAL 500mm CTRS.

FIXING NOTES:

THE FLOOD COMPANY TO SUPPLY SINGLE DOOR SET, BLACK GLAZING TAPES, GREY SILICONE, BACKER ROD, FIXING STRAPS, PACKERS & FIXINGS.
INSTALLER(S) TO ENSURE THE SCREEN IS FIT INTO A SUITABLE OPENING.
ALL TOLERANCE PERIMETER GAPS TO FILLED WITH 10mm BLACK BACKER ROD AND SEALED WITH GREY SILICONE.

NO BARRIER LOADINGS OR STRUCTURAL CALCULATIONS HAVE BEEN SPECIFIED

Rev. DB CK COMMENT. DATE.



The Flood Company
THE FLOOD COMPANY COMMERCIAL LTD
UNIT 5, RIVERSIDE MILLS
SADDLEWORTH ROAD
ELLAND
HX5 0RY
LANDLINE
+44 (0)1484 505509

DWG TITLE SINGLE FLOOR RESISTANT DOOR
NEW DESIGN

JOB REFERENCE

CUSTOMER THE FLOOD COMPANY

ISSUE TYPE PRELIMINARY DATE 01.02.2018

SCALE 1:2 & 1:10 PAPER A1

DRAWN BY BL CHECKED BY

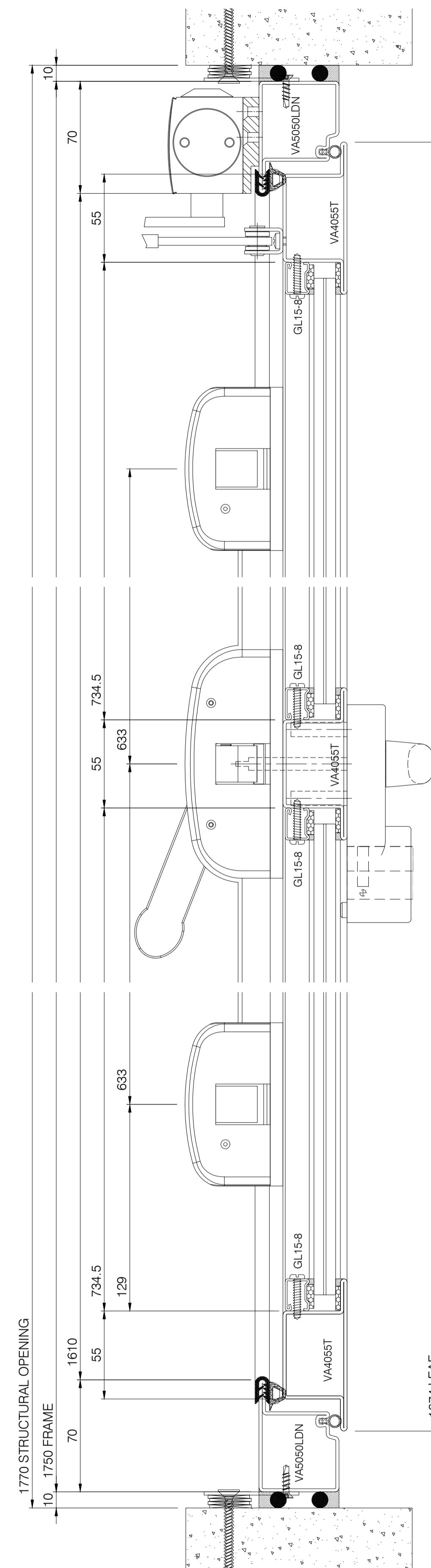
JOB No. DWG. No. Rev.
24281 - NTD-S-001 -

GLASS SIZES			
REF	SIZE (mm)	WEIGHT (kg)	QTY
G1			

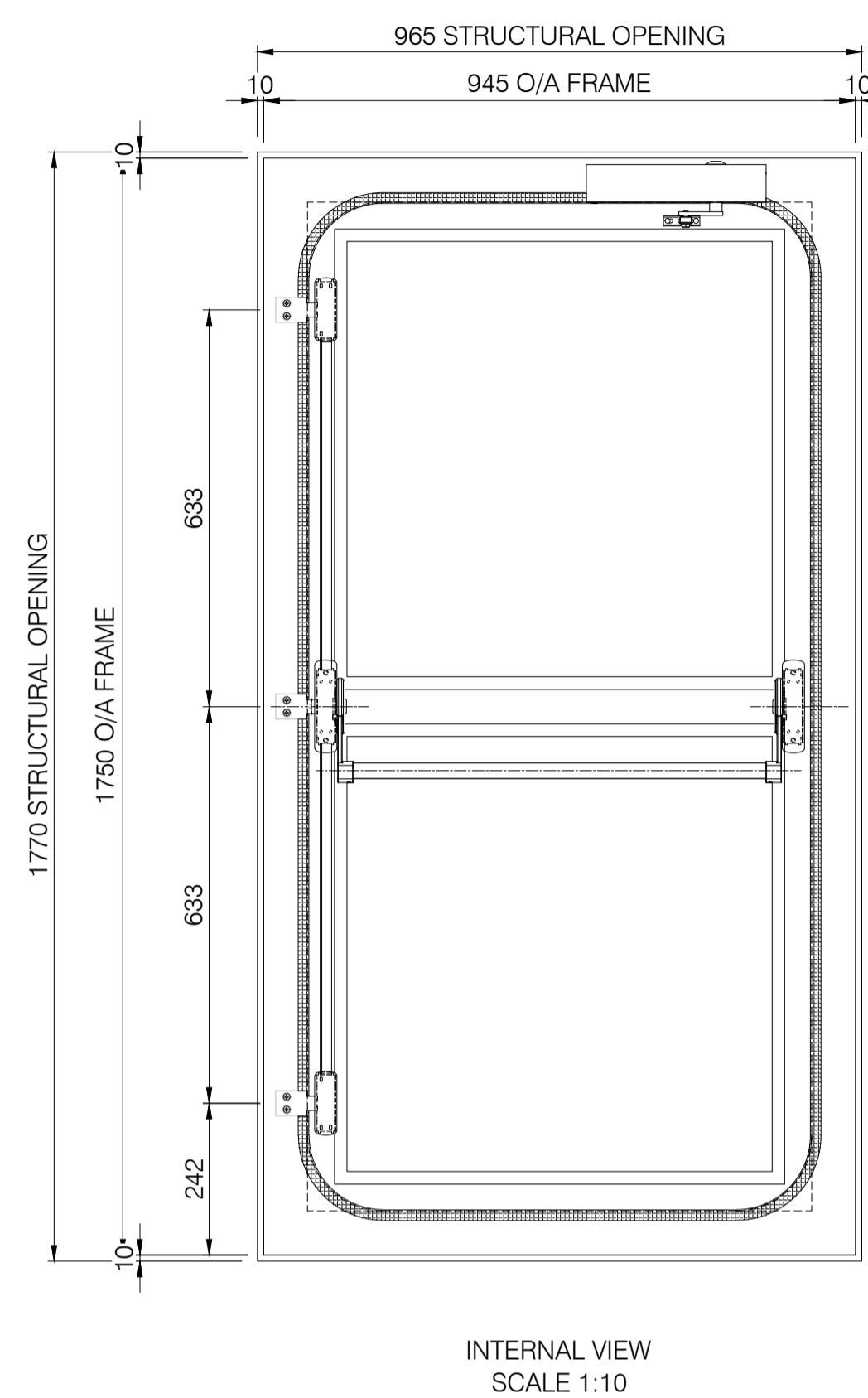
1No OFF REQUIRED

DOOR / SCREEN TAG REFERENCES

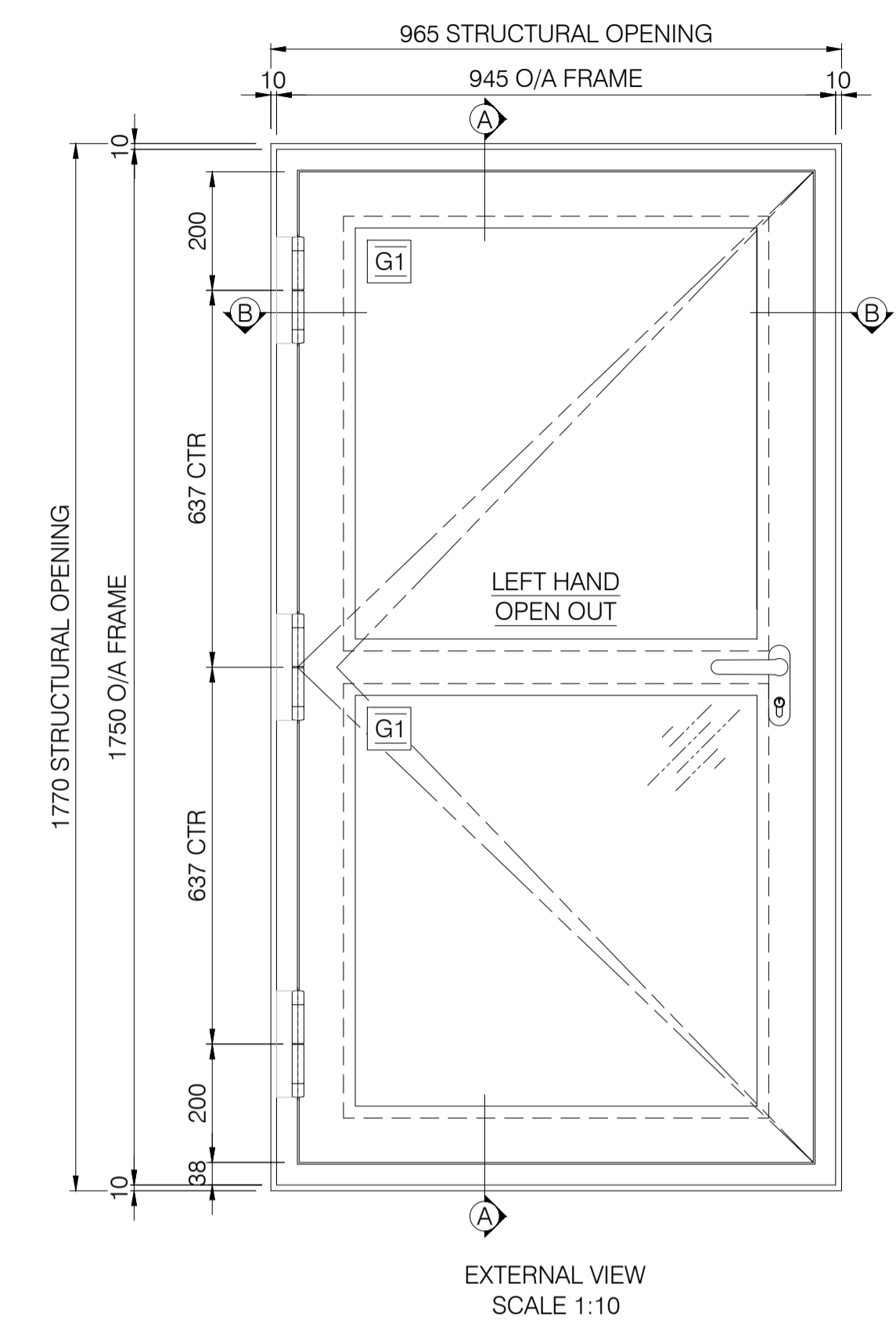
REF	TAG REF	FLOOR LV	QTY
FD1	FD1	GF	1



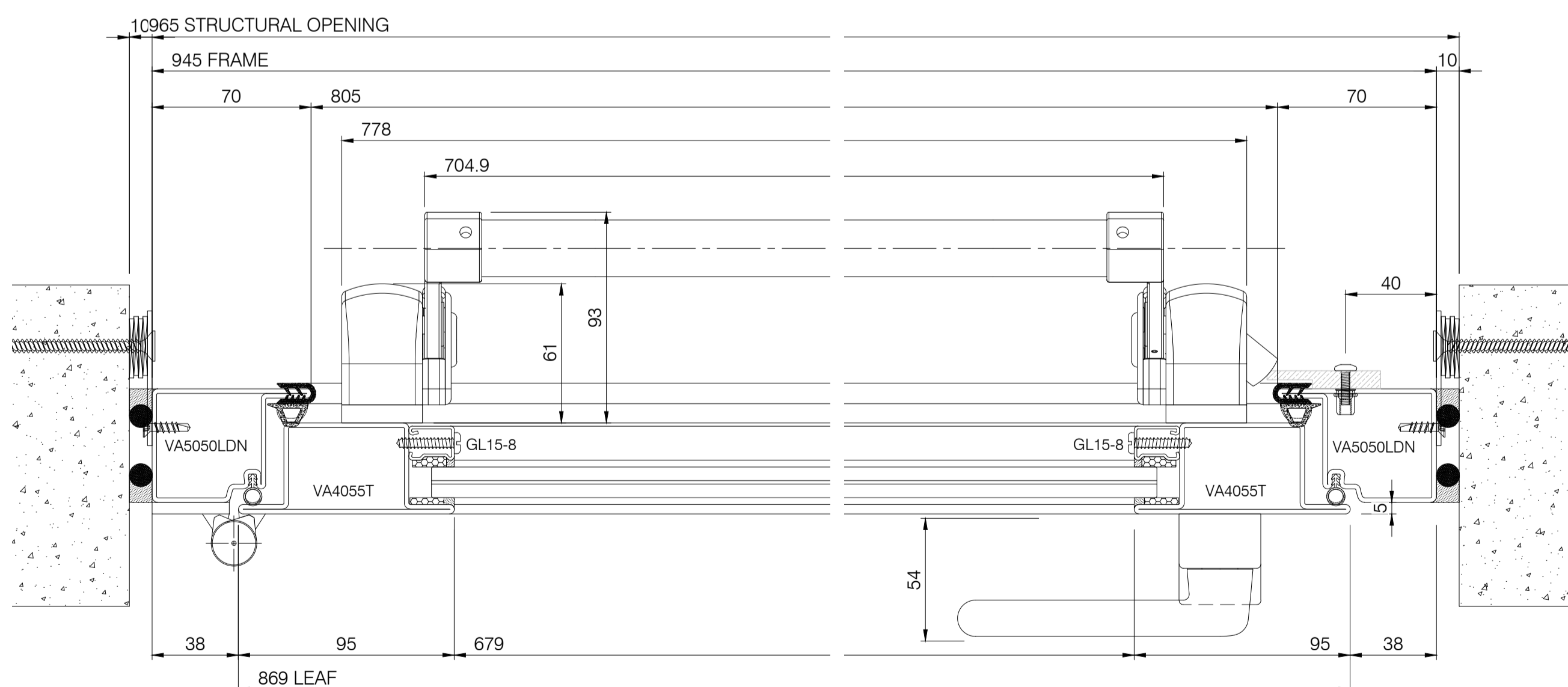
1 SECTION A-A
Scale: 1:2



INTERNAL VIEW
SCALE 1:10



EXTERNAL VIEW
SCALE 1:10



2 SECTION B-B
Scale: 1:2